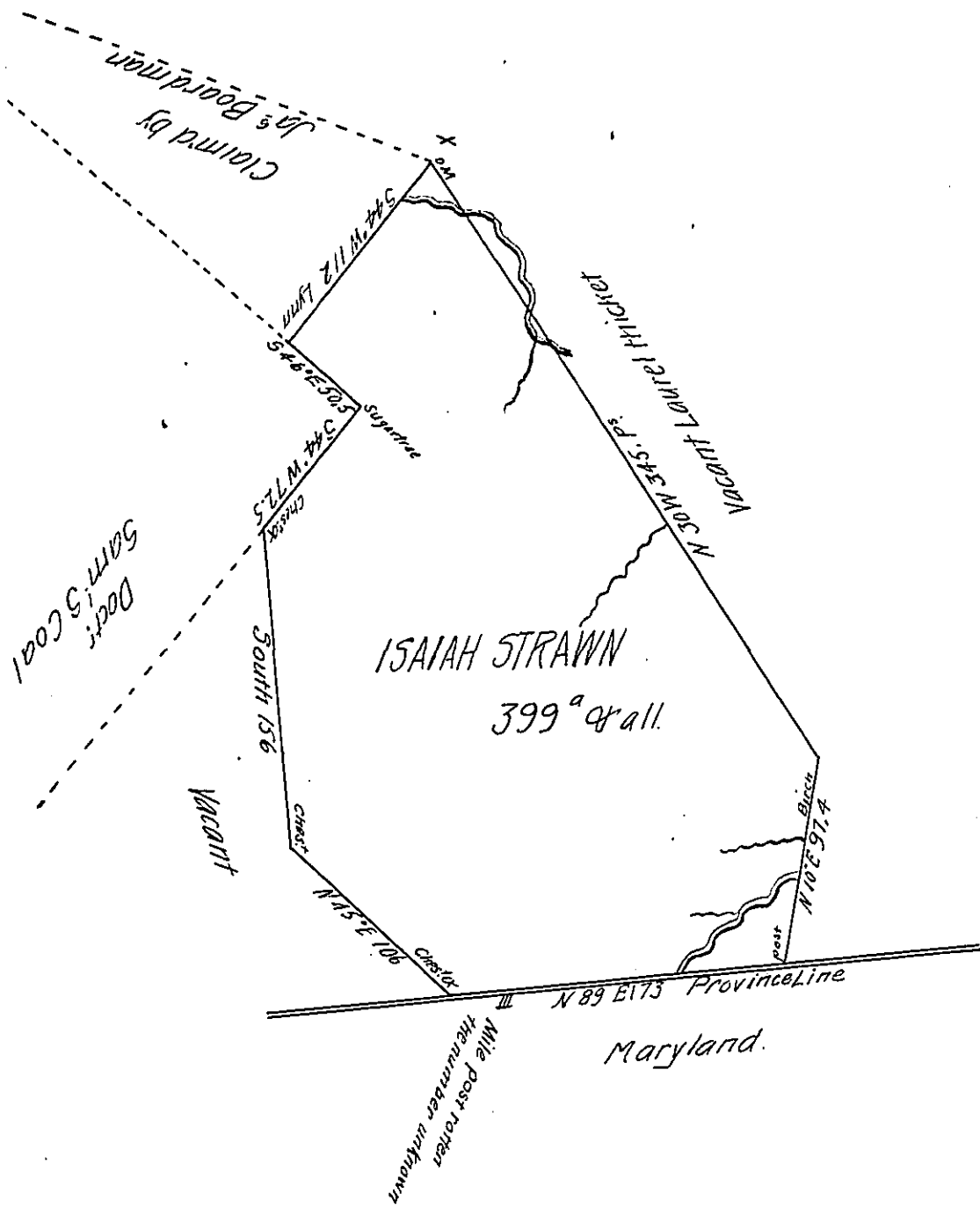


FORM NO. 1.



Situate on the Pack Horse ridge on the waters of John Jones Mill run adjoining the province line in Addison Township Somerset County and surveyed the 22^d day of June 1802 in pursuance of a warrant dated the 9th day of December 1801.

John McClean Deputy

To Samuel Cochran Esquire.

Surveyor General.

IN TESTIMONY that the above is a copy of the original remaining on file in the Department of Internal Affairs of Pennsylvania, made conformably to an Act of Assembly approved the 16th day of February 1833, I have hereunto set my hand and caused the Seal of said Department to be affixed at Harrisburg, this nineteenth day of December 1906

Isaac P. Brown
Secretary of Internal Affairs.